



**WORLD
DREDGERS**



WE ARE YOUR COMPETENT PARTNER

Suction dredgers, pumps and wear parts



ABOUT US

The team of World Dredgers is your specialist for suction dredgers designs and constructions and all related spare parts destined for the lucrative extraction of gravel and sand.

We offer you solutions which are individually tailored to your requirements as well as a complete all-round service: from planning, through installation, to maintenance of the device over its entire service life.

OUR ASPIRATION

Based directly on the German-Dutch border, World Dredgers is not only represented regionally but also in the whole European area.

We are continuously developing our longtime experience and our technical knowledge. Our focus is on innovative technologies to improve the energy efficiency of our suction dredgers. The reduction of CO2 emissions is our contribution to the environment and its resources.



WE ARE HAPPY TO HELP YOU

Our brochure will give you a first impression of our company and the services we provide but we would be happy to advise you personally and individually.

World Dredgers GmbH & Co. KG

Hafenstrasse 4-6

46483 Wesel

Tel.: +49(0) 281 204 - 0

E-Mail: info@world-dredgers.com



SUCTION DREDGERS

World Dredgers has earned a reputation amongst its customers for constructing, converting or modernizing suction dredgers in a manner that makes them suitable for the purpose of sand/gravel extraction.

We independently develop standardised concepts for the construction of the most efficient and highest performing suction dredgers which can achieve the highest yields. These concepts can of course be technically adapted to customer-specific wishes and requirements.

The advantage of constructing dredgers in a standardised manner consists in the fact that almost all components are in stock so that a downtime of suction dredgers due to lengthy repair works and an associated loss of productivity can be avoided. We offer both diesel-powered and fully electrically operated suction dredgers which are equipped with the latest dredger automated systems and dredge control systems. Our suction dredgers can be disassembled and transported by truck / low loader.



Important criteria for the extraction of sand and gravel from an extraction site include the local conditions, as for example the dredge depth, the soil conditions, the dimensions of the extraction site and the relevant ecological regulations.

On the basis of these parameters and the requirements of our customers we calculate the dredge costs per t sand/gravel.



PUMP STATIONS / BOOSTERS

In addition to suction dredgers, World Dredgers also offers pump stations or boosters. We are able to deliver these products either in the form of individual parts or ready for operation in the assembled state in a container including automatic speed control and remote control.

By default, we arrange the dredge pump and the electric drive (or diesel drive) in one line on a stable basic frame.

An electrically driven pump set is equipped with a control cabinet including a frequency converter for automatic control of the sand pump speed.

The booster stations may be equipped with a PLC controlled automatic control unit which guarantees the optimum rate of rotation of the sand pump on the basis of a pre-set intermediate pressure in combination with the delivery pressure.



PUMPS AND WEAR PARTS

Every dredger comprises a dredge pump as its core piece.

We sell and supply different types of Warman pumps such as sand/gravel pumps for use both above and below the water line, double-walled pumps and booster pumps, each available with different seals.

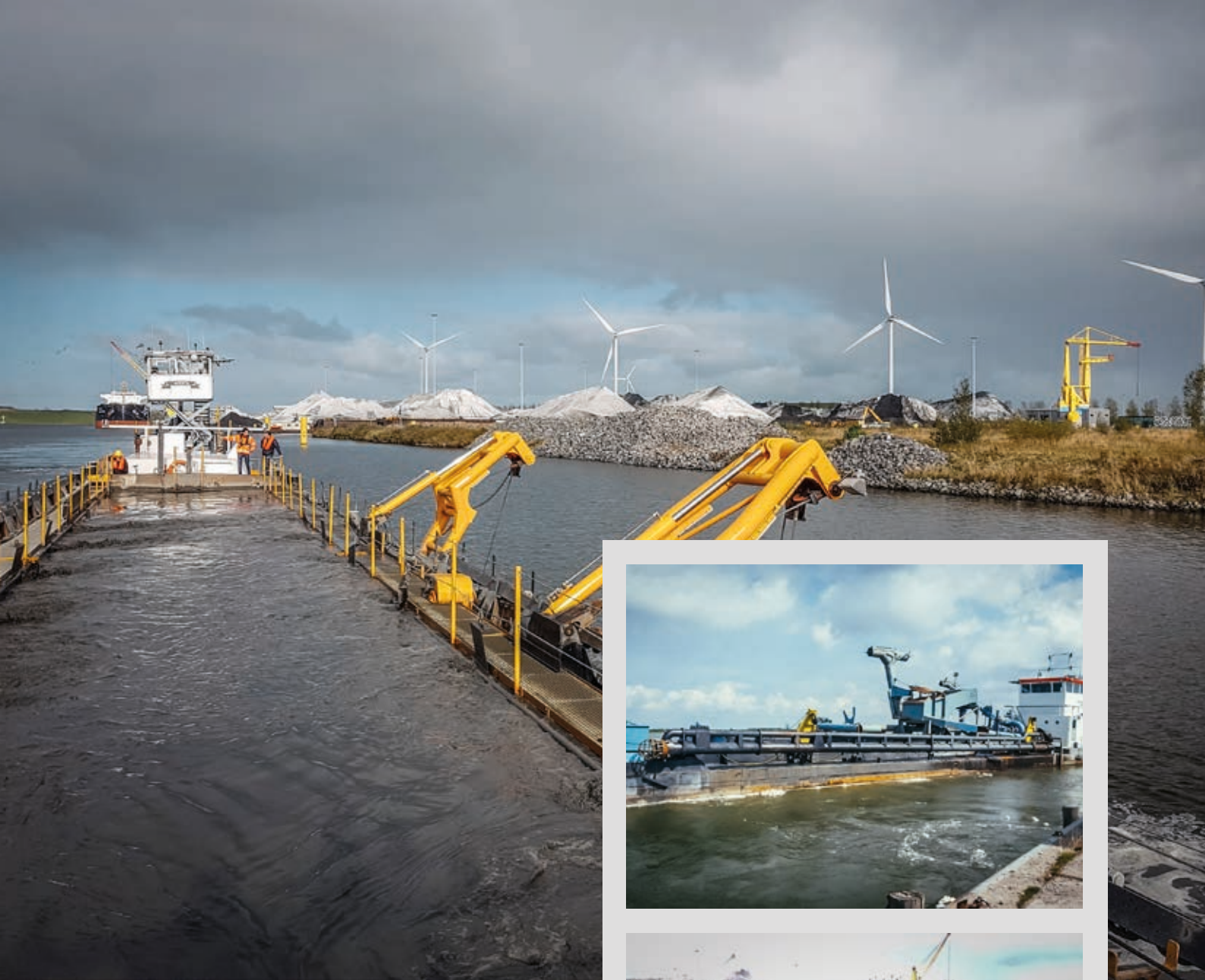
It is of utmost importance for the smooth progression of the dredging process to select the right type of dredge pump.

Warman pumps stand out for their ability to attain a long lifetime and the fact that they are made of extremely wear resistant material. We have used

our longstanding experience and know how in this field to develop a program for calculating the pump and pipe resistance. By using this program we are able to determine which type of pump and which type of conveyor pipe is best suited to achieve maximum efficiency.

We place special emphasis on designing a product which has the lowest energy consumption, minimum wear costs and achieves a high performance.

We are able to supply suitable wear parts from our stock for the most common Bagema dredge pumps.



TOWHOPPER INSTALLATIONS

World Dredgers has already sold various pieces of equipment for trailing hoppers.

This includes not only the complete installation of a dredger but also the delivery of all dredger parts such as pumps, suction pipe installations, carriage plates and carriage guides and shut-off valves.





OUR SERVICES

We are proud to be a service-oriented company with skilled technicians working for us who are available round the clock to do maintenance and repair work for you. This applies both to the automated and electric section and for necessary work to be performed on pumps and suction dredgers.

If possible, we will assist you to solve any problem which may arise via telephone but, if necessary, a technician will provide assistance on site within a short time.

We employ specially trained fitters who can carry out repairs on Warman pumps and other pumps. Of course, all maintenance and repair work can be carried out on site in your company.

We keep a large range of spare parts and wear parts in stock. In order to prevent unnecessary downtime leading to a production stop, we offer periodic inspections of the suction dredger technology and accessory equipment.



**WORLD
DREDGERS**

World Dredgers GmbH & Co. KG
Hafenstrasse 4-6
46483 Wesel
Tel.: +49(0) 281 204 - 0
E-Mail: info@world-dredgers.com

